

**SureProtect Artworx provides protection against everyday scuffs and scrapes. However, care should be taken during transport, handling and installation to avoid damage. It is also advisable to consider the timing of the installation to avoid damage by other trades.**

1. Substrate suitability and recommended preparation

All material must be installed in environmentally controlled conditions. Allow the SureProtect Artworx PVC-u sheet to lie flat at room operating temperature for 24 hours prior to installation. During installation the wall and wallcovering must be 15°C or above.

**NOTE:**

**The area must remain at 15°C or above for 24 hours post installation.**

Substrates suitable to install SureProtect Artworx PVC-u wall cladding include:

- 9mm exterior smooth finished plywood
- MDF board
- Plaster
- Sand and cement rendering (smooth finish)
- 12.5mm plasterboard (minimum thickness)

Brick, blockwork and concrete walls are also suitable providing the surfaces are flush without excessively wide mortar joints.

The substrate must be:

- Dry, sound, and free of dirt, dust, loose paint, wax and grease. Loose or flaky surface coatings should be repaired or removed.
- Flat and smooth. High spots should be removed, and low spots filled with an appropriate filler prior to commencing installation.

Additional considerations include:

- Ceramic tiles must be checked to ensure they are fully secured. Repair loose or broken tiles where necessary to provide a continuous flush surface. Tiles should be flush (+/- 2mm over 1 meter)
- Dependent on substrate a suitable PVA primer may be required.
- Wherever possible electrical equipment such as power sockets or light switches should be completed only to a first fix installation state prior to installation of the wall cladding system. Any alteration or changes required to live electrical equipment should only be carried by a qualified electrician.
- There should be a 2-3mm clearance around the perimeter of any protruding object to allow for potential expansion of the PVC-u sheet. All pipework should be finished with tails to ensure ease of installation of the sheet. Clearance of 3mm is required for expansion on cold pipes and 5mm where pipes are designed for the flow of hot liquids.

**WARNING: Installing SureProtect Artworx PVC-u sheet material in conditions other than the operating temperature of the installation can result in product failure**

2. In order to maintain pattern alignment and ensure layout, it is important to dry fit all sheets prior to installation. If installing custom designs, refer to drafting details for layout references.
- a. Full-Height Installation: Establish a plumb line to be located at the edge of the first sheet. This will serve as a starting point for the wall covering to be installed on that wall and will ensure the following sheets will be installed plumb. Establish a plumb line at the beginning of each new installation of wall covering.
  - b. Wainscot Installation: Establish a level line at the specified height for the entire length of the run. Install the wall covering by aligning the top edge with this line. A level line should be established for each new installation.
3. Prepare the first sheet by making any necessary cutouts or scribe the edge to fit the inside corner if applicable. Allow a 2mm gap around door and window frames, ceilings, and skirting boards. Use a straight edge to ensure neat cutouts.
-

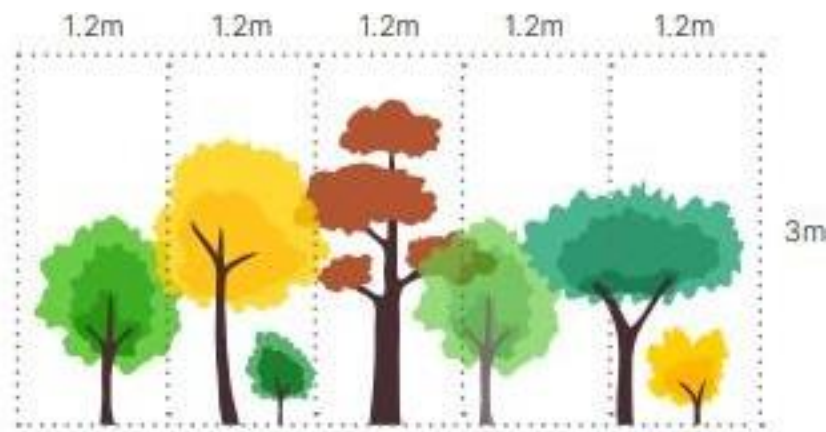
### Installation Instructions

---

**SureProtect Artworx™ Print**

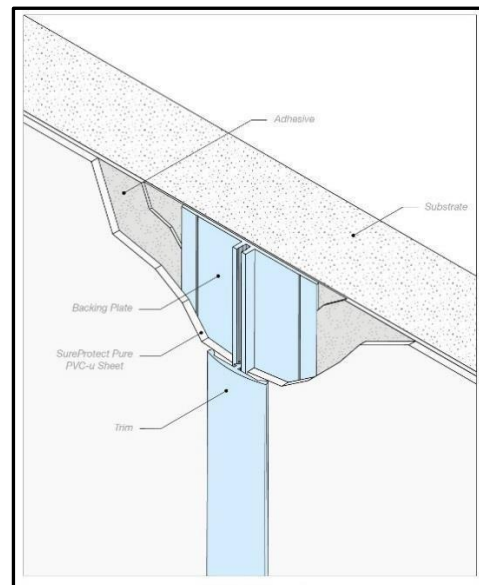
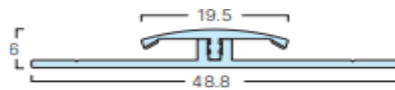
**Data Sheet: Page 2 of 4 DW    January 2024**

4. Place the sheet with the printed side up and wipe the reverse of the sheet with a clean, damp cloth to remove any dust or dirt.
5. If trimming is required, score the sheet using a heavy-duty utility knife fitted with a straight blade, ensuring to score along the cut line at least twice before cutting through using a hook blade. When a butt joint is needed, leave a 2 to 3mm gap between sheets to allow for expansion.
6. Trimming of sheets, when required, should be done at the beginning and the end of a run only to ensure pattern alignment on standard patterns only. Custom printed images should be cut and trimmed as noted on the submittal and digital drawings supplied at the tender stage.

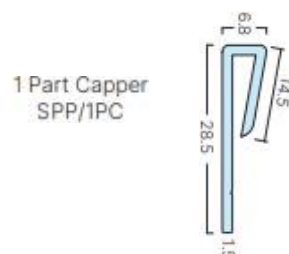


7. The adhesive can be applied most efficiently by means of a suitable applicator gun & Grunfeld Nozzle. One multi-hole nozzle is supplied with each box of 15 WGE1 cartridges. Apply the adhesive to one surface only, either the wall or the sheet.
8. Ensure there is adequate coverage of adhesive to the edges of the Wall Cladding. This can best be achieved by applying the adhesive in long straight lines parallel to the short edges of the sheet. The outer bead of adhesive should be no more than 10mm from all edges. Cover the entire area of the sheet with long straight beads keeping overlap of applied adhesive to a minimum. For intricate areas it is possible to spread the adhesive using a B1 trowel.
9. Only apply the recommended coverage loading of adhesive to an area of the wall cladding or wall surface that can be completed within the cure time of the adhesive. A 'B1' V-notch trowel must be used to spread the coverage loading evenly over the designated area.
10. Once the wall cladding sheet has been aligned with the plumb line or adjacent sheet, use a roller to ensure maximum contact with the Adhesive. With the roller, start in the middle of the sheet and work toward the top, bottom and edges using full-width strokes in an arching motion. By smoothing the sheet, you will also be able to remove any trapped air pockets. Once completed, run the palm of your hand over the entire surface, feeling for bubbles or loose areas. Repeat the smoothing process as necessary until the entire sheet makes full contact with the adhesive.
11. A choice of three options to mask joints between applied cladding sheets are:
  - a. Silicone Mastic SPESC310 available in a range of single colours.
    - i. Pull back the protective film sufficiently from the edges of the sheet and apply masking tape to assist in the sharp finish application of the silicone mastic.

- II. Finally check that the joint is clean before applying the sealant to the joint. Ensure the joint is completely filled along the entire length.
  - III. Remove any surplus silicone and then smooth off to provide a clean flush sealed joint. The masking tape should then be removed, and any final finishing completed.
- b. 2 Part Printed Joiner Trim SPAPT to match the design pattern.
- I. Install the first sheet and then slide the base section of the profile in place leaving a 1-2mm gap between the edge of the sheet and the shoulder of the base profile. Repeat this process working your way along the walls and around the room.
  - II. Peel back the protective film slightly from the edges of the sheet the protective film and clip the top covers into the base of the joint strip. These should be worked in by hand and then finished with a rubber mallet to lock the two pieces together into their final position.
  - III. Note: to avoid any interference when the floor trims are pushed into position, the vertical joint cover strips should have the back element of the trim removed. Cut the top accordingly to length on the face to accommodate the floor trim.



- c. Butting-up the applied cladding sheets to leave a minimal gap.
12. A one Part Capper SPP/1PC may be used as part of the installation for finishing. Cut each item to the appropriate length using a utility knife. Tuck the 'long leg' down the back of the sheet whilst bringing the 'short leg' over the front of the sheet & press down to the finished position.



**Fitters Tips:** Always use a laser level, a sharp blade, a good straightedge to score along and a multi-tool for cutting out tricky parts such as plug sockets and pipework. Once the sheets are installed, they will expand or contract based on temperature changes therefore it's important to leave a 2-3mm gap against architraves, ceilings, pipework etc. (hot pipes will require 5mm clearance) as part of the installation process. These void junctions can then be filled with colour matched silicone to match the sheet.

13. Recommended adhesive product for SureProtect Artworx PVC-u Sheet.

The adhesive stated below has been tested and approved to give satisfactory bonding of SureProtect Artworx to the substrate and to ensure fire performance of Class B-s3,d0 according to EN 13501-1. It is important to follow the adhesive application instructions faithfully in order to maintain the fire performance stated. If you have any queries regarding the adhesive, please contact Gradus directly. Use of adhesives not recommended by Gradus should be supported by a guarantee from the adhesive supplier for satisfactory bonding and maintaining strict fire performance.

**Note - only Gradus Grip WGE1 has been tested to ensure a satisfactory bond and provide the strict fire performance requirements necessary when bonding SureProtect Artworx cladding to walls.**

	Product Reference	Adhesive Type	Unit Size	Trowel Size	Coverage
1	Gradus Grip WGE1	one-part reactive adhesive which relies upon atmospheric moisture to cure.	1 Kg	B1 2mm V Notch	450g per m2

Application of the named adhesive must be actioned in strict accordance with the relevant manufacturers' instructions. If you have any queries regarding adhesives, please contact the adhesive manufacturer directly. The adhesive needs to be applied to give a coverage of approximately 1kg per 2 square meters. Cure time is 48 hours and the sheet should not be subjected to any swings of temperature greater than 3°C inside of this curing phase.

14. Finishing Accessories

Product Reference	Description
SPAPT	2 Part Printed Joiner Trim
SPESC310	Silicone Sealant
SPP/1PC	One Part Capping Trim